

# B2 Trader

## User Guide



start

# 01. How To Select Dates To Screen

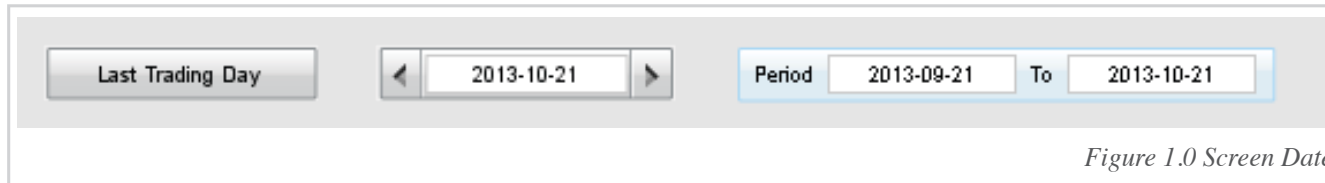


Figure 1.0 Screen Date

You are given an option to screen the market based on your desired dates by selecting "Last Trading Day", "Specific Date" or by selecting a certain "Period".

# 02. Market Selection

B2Trader gives you the flexibility to view screening results from different markets. By a simple click, you are able to see long or short signals from your preferred market.

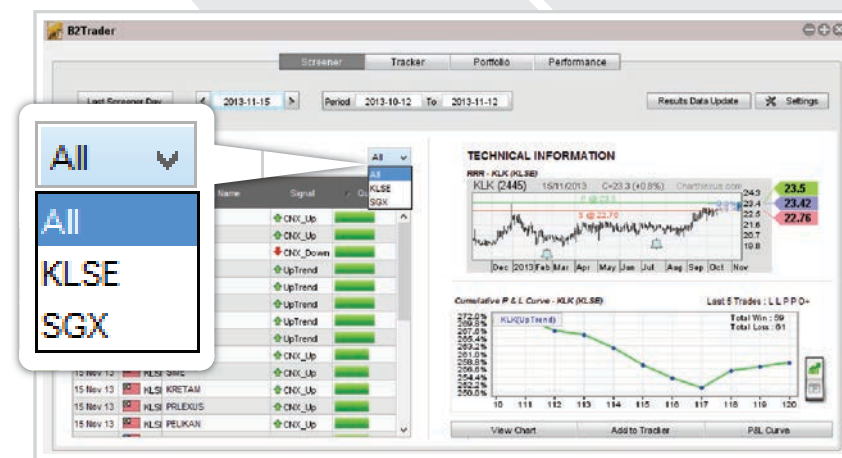


Figure 2.0 Marketing Listing

# 03. Viewing The Screener Results

The "Signal" column indicates the strategy triggered by the particular stock. 4 trading rules are used in the B2Trader

- Bullish Strategies:
  - CNX\_UP
  - UpTrend
- Bearish Strategies:
  - CNX\_DOWN
  - DownTrend

The "Quality" column ranks screening results based on its past performance.

- Win/Loss Ratio: The higher the winning rate, it is more effective to apply the strategy in the counter.
- Number of trades tested: The more the trades, the more reliable it is.
- Total Return: Measures the cumulative profit/loss of the strategy on the stock.



Click on "Single" button to view single stock.



Click on "Comparison" button to compare stocks up to 8 selections.

Date	Excha...	Stock Name	Signal	Quality
15 Nov 13	KLSI	PBBANK	↑CNX_Up	██████████
15 Nov 13	KLSI	PERDANA	↑CNX_Up	██████████
15 Nov 13	KLSI	MRCB	↓CNX_Down	██████████
15 Nov 13	KLSI	HLBANK	↑UpTrend	██████████
15 Nov 13	KLSI	TENAGA	↑UpTrend	██████████
15 Nov 13	KLSI	KLK	↑UpTrend	██████████
15 Nov 13	KLSI	MUHIBAH	↑UpTrend	██████████
15 Nov 13	KLSI	MAA	↑UpTrend	██████████
15 Nov 13	KLSI	HLBANK	↑CNX_Up	██████████
15 Nov 13	KLSI	SIME	↑CNX_Up	██████████
15 Nov 13	KLSI	KRETAM	↑CNX_Up	██████████
15 Nov 13	KLSI	PRLEXUS	↑CNX_Up	██████████
15 Nov 13	KLSI	PELIKAN	↑CNX_Up	██████████

Figure 3.0 Screening Result Window

You can double click on the result to view the chart.

Green Line indicates the technical Profit Target

Blue Line indicates the technical Entry Price

Red Line indicates technical Stop Loss



Figure 3.1 Stock Chart



Figure 3.2 Strategy Result



Green dollar sign indicates profitable trades.



Red dollar sign indicates losing trades.



Green Arrow Indicates Bull Signal. The number indicates the sequence.



Red Arrow indicates Bear Signal. The number indicates the sequence.

## 3.3 Technical Information about the counter



You are able to have a quick glance on a counters price action by viewing the summarized chart under "Technical Information" E,S,P are indicated.

Figure 3.3 Technical Information



## 3.4 Cumulative P & L Curve



Figure 3.4 Cumulative P & L Curve

On the bottom right corner you are able to see the Cumulative P & L Curve which records the strategy effectiveness in number of times the stock win/loss and the total profit/loss from Initial Public Offering Date till today.



Click on the icon to toggle between calendar view or table sequence view.





Figure 3.5 Cumulative P & L Curve (Period)

- View Chart** To view stock chart.
- Add to Tracker** Add the particular stock into your tracking list.
- P&L Curve** To view stock in Cumulative P&L Curve chart.

# 04. Comparison

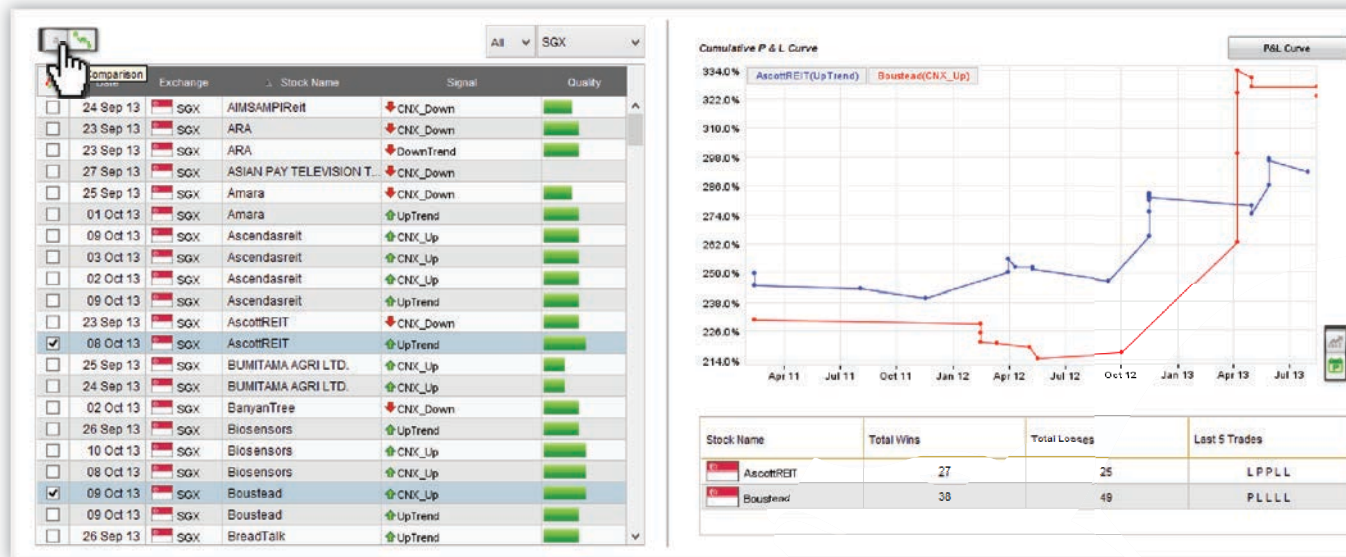


Figure 4.0 Stocks Comparison



Click on the comparison icon to compare back testing performance of the stocks you desire (Max.7 stks) on the triggered signal. This is to provide user a much easier way to choose quality stocks for trading when there are 2 or more identical quality stocks in the screening result.



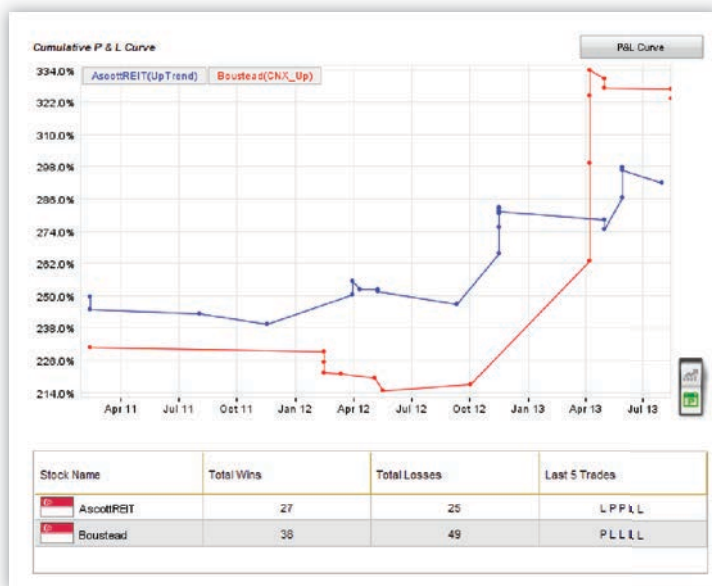


Figure 4.1 Comparison Chart

Each dot on the comparison chart represent 1 trade.  
 The last 5 trades are presented in "LPPLL" format.

L : Loss

P : Profit

0+ : running position with profit

0- : running position with loss



# 05. Tracker

Tracker feature tracks the "last done" price against the stop loss and profit target level.

To view the stocks added in tracker (How to add to Tracker refer to figure 3.7). Click "Tracker".

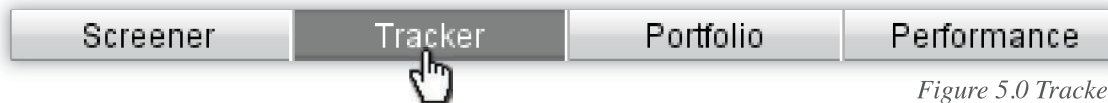


Figure 5.0 Tracker

Then you will direct to a page with the stocks you include to Tracker.

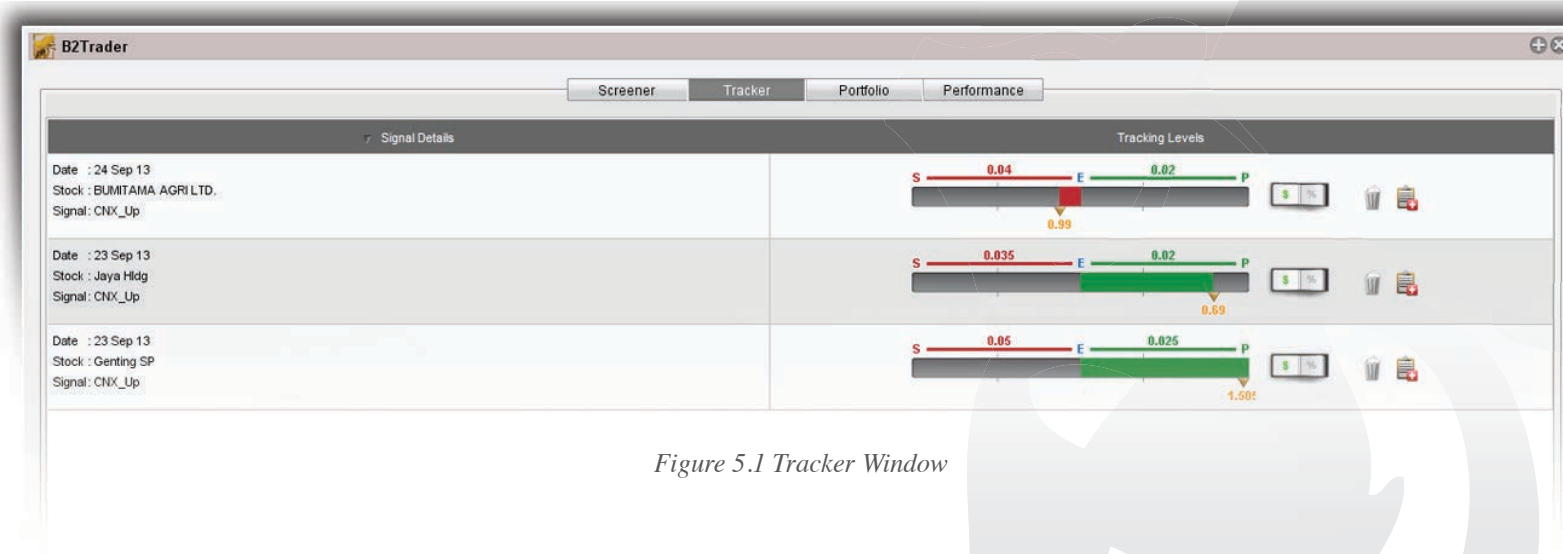


Figure 5.1 Tracker Window

ESP is shown in Tracker. The number in Stop loss shows the position risk. Number at Profit target is the position reward.

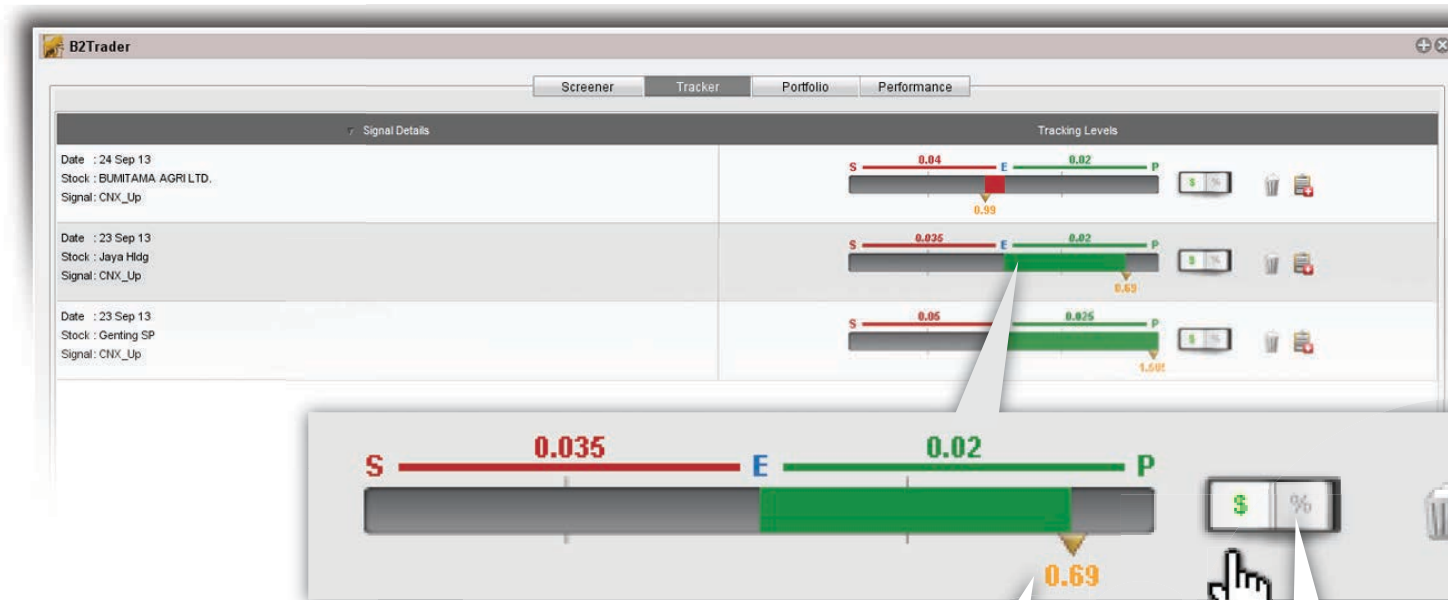


Figure 5.2 Tracker ESP

The number in Yellow shows the current stock price. For example, figure 5.2 current price is 0.69 which is near the Profit Target (P).

Click to view either % or value.

# 06. Setting Up

## Portfolio

It is frustrating to have many different portfolio separated with different brokerage rate, in different market/country, and different currency. Here, we are offering you a one stop solution to have your entire portfolio in different markets into a consolidated portfolio. The function allows you to have a better view with our B2Trader Portfolio features. Let's get it started. Click on the Performance button at the top of the B2Trader Window as shown below.



Once you click on the portfolio tab, a Base Currency window will pop out request to set the currency based on your portfolio in figure 6.0. This currency will be used as a default currency for your portfolio.

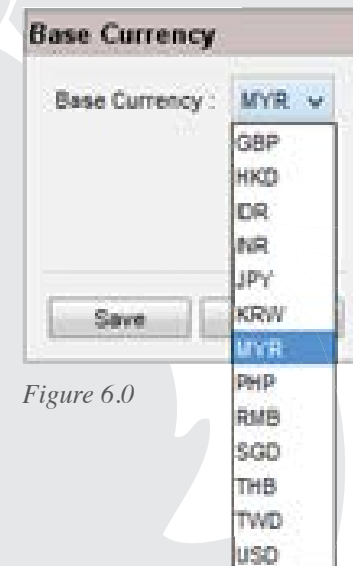


Figure 6.0

After setting your currency, you will need to add the amount of capital you have in your profile. To add capital, click on "Capital Profile" as shown in figure 6.1.

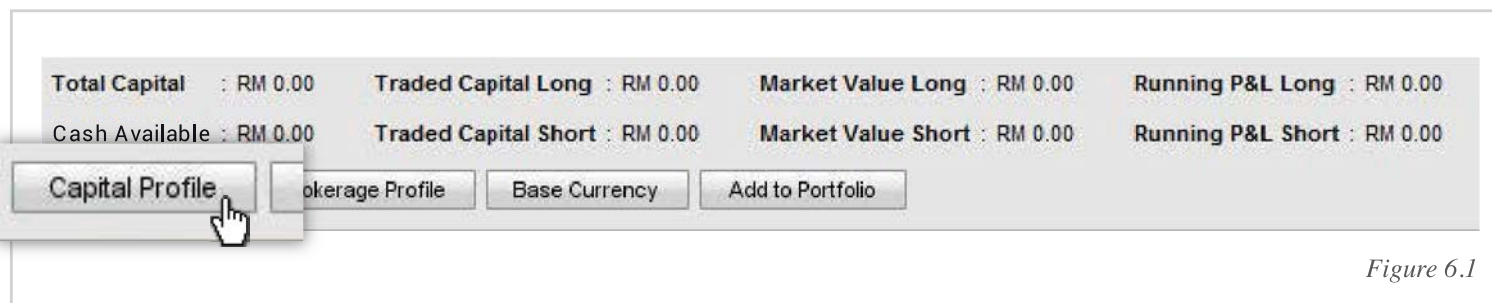


Figure 6.1

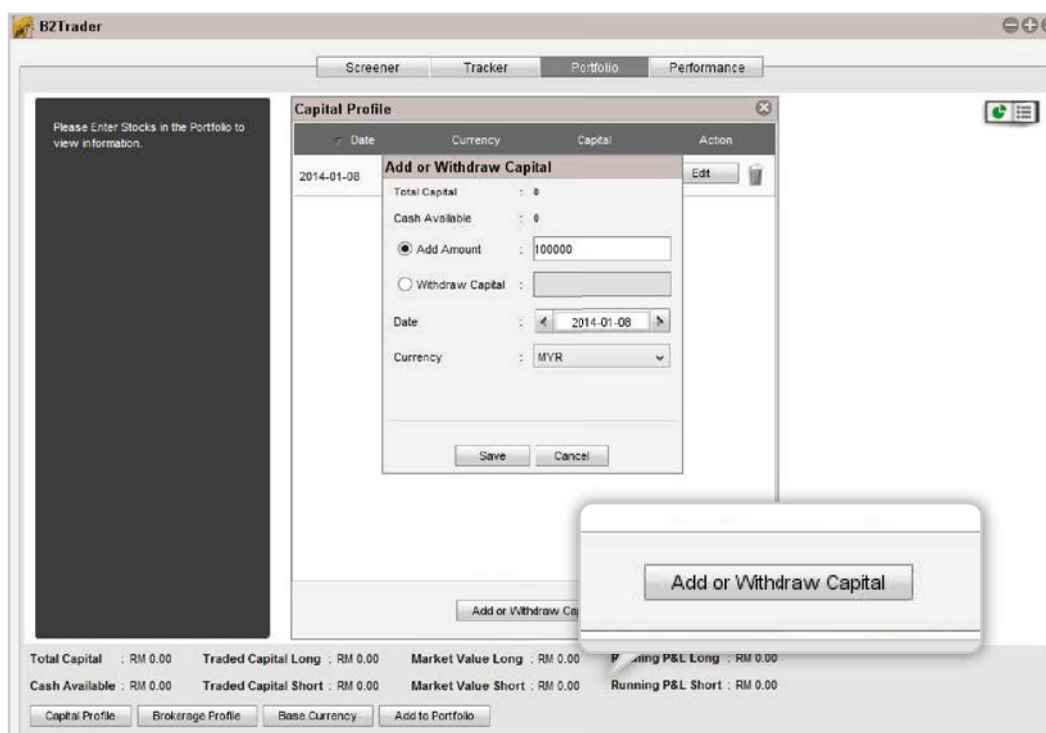


Figure 6.2

Then a window name "Capital Profile" will pop out. Click on "Add or Withdraw Capital" button to add capital.

A window of "Add or Withdraw Capital" will pop out. You may add the capital in "Add Amount" column and select the date you add capital. This feature will provide you a track record of your trading performance.

You may also withdraw capital by checking on the withdraw capital section shown in figure 6.2. Then enter the withdrawal amount with its date and currency.

After you have added the capital, you will now be able to view your Portfolio in a pie chart with the cash available in your portfolio as shown in figure 6.3.

Investors and Traders may have their portfolio diversified to different countries with different brokerage fees imposed. In order to make it easy for you to monitor your portfolio, we have added a feature in "Brokerage Profile". With this feature, you may compose different Brokerage Profile according to the brokerage that is servicing you, simply by clicking on the Brokerage Profile button at the bottom session of the "Portfolio" window.

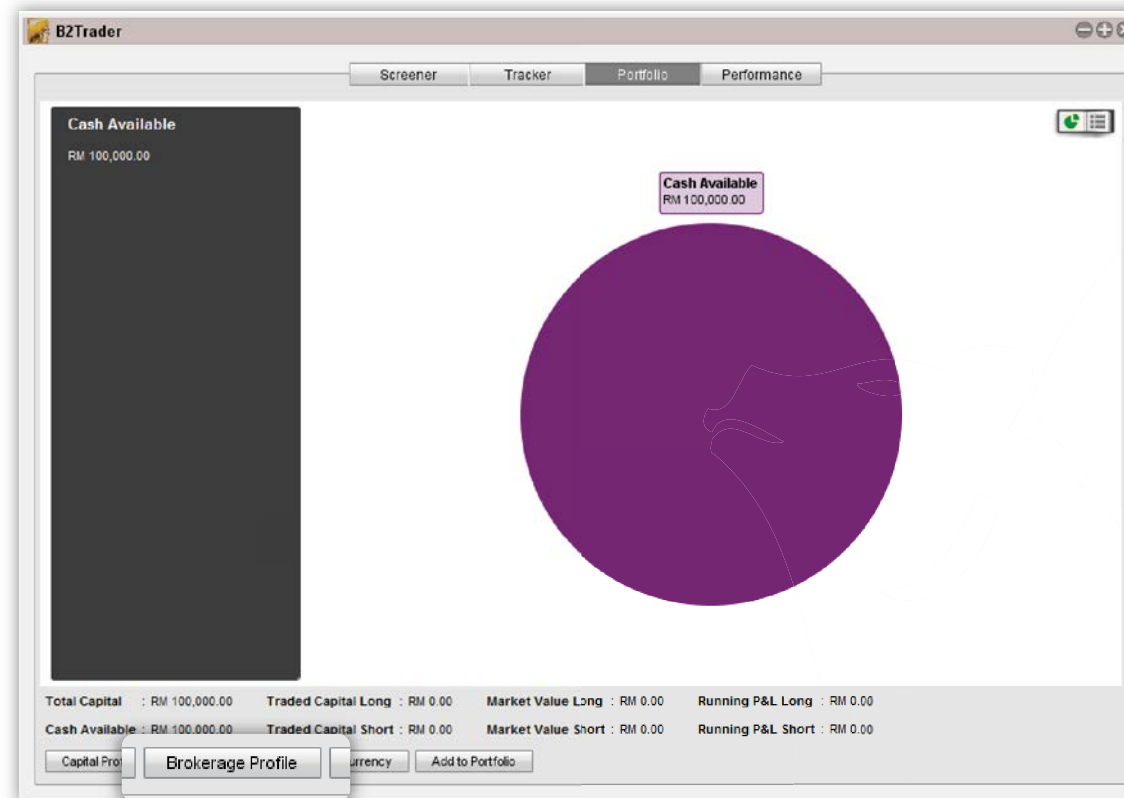


Figure 6.3

**Brokerage Profile**

Name of Profile : MY Broker

Minimum (\$) : default  
MY Broker

Variable > (%) : 0.1

Miscellaneous Cost : 10

New Save Remove

Figure 6.4

After you click on "Brokerage Profile", a new window will pop out for you to compose your brokerage fees. You may use the default brokerage fees in B2Trader or you can compose it by keying in the minimum brokerage fees, the percentage of brokerage fees and the miscellaneous cost as seen in figure 6.4.



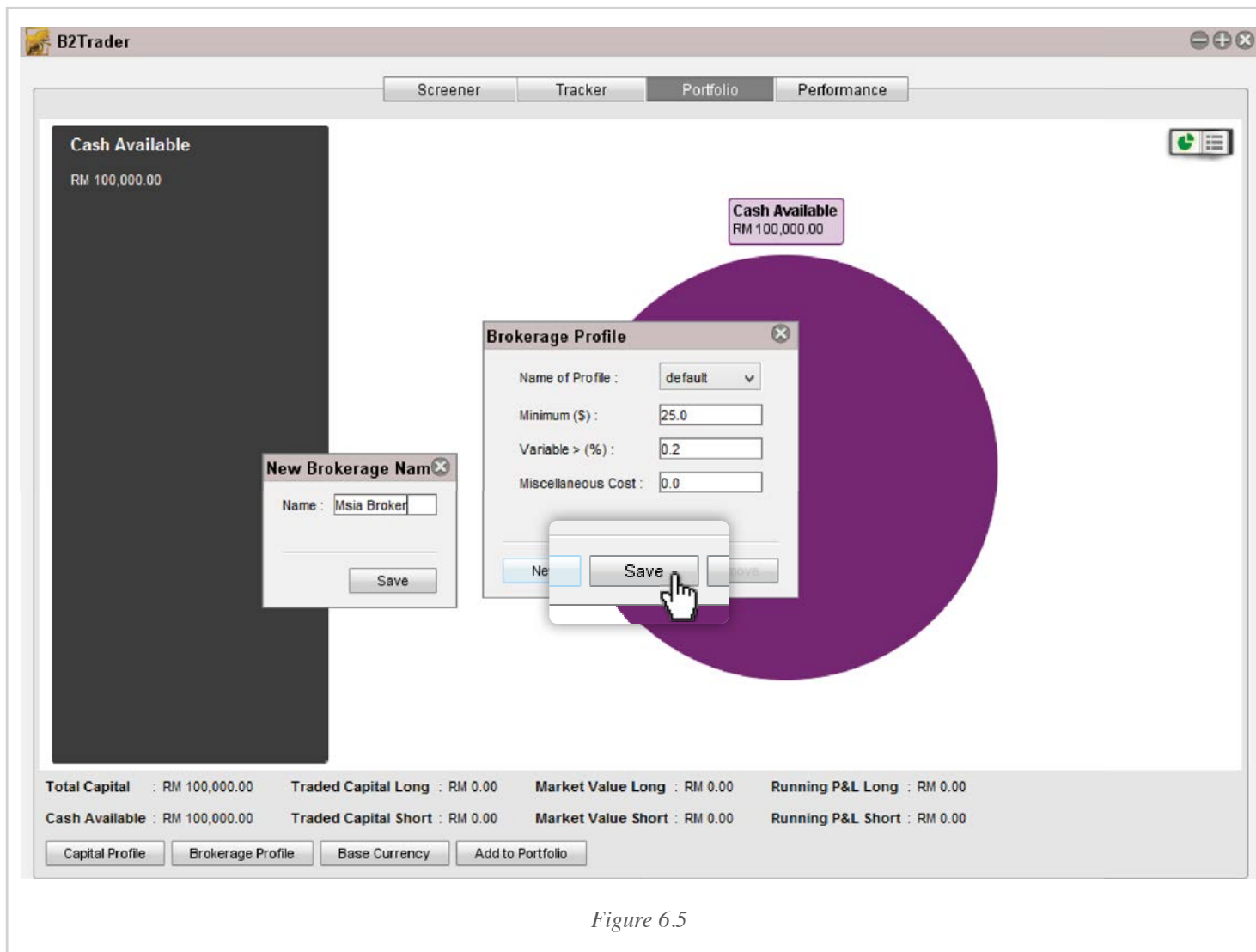


Figure 6.5

After you have keyed in the brokerage cost, click on the "Save" Button and name the brokerage profile to save your brokerage profile. Refer to figure 6.5.



After you have composed your brokerage profile, you are now ready to add your stocks into the portfolio. To add stock in the trading portfolio, simply click on the "Add to Portfolio" as seen in figure 6.6.

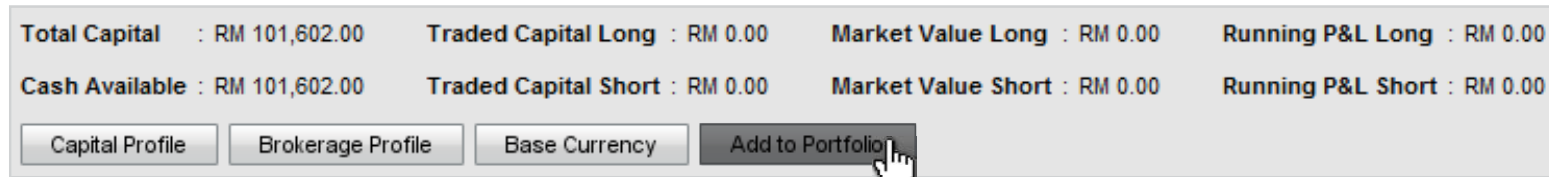


Figure 6.6

Then a new window, "Add to Portfolio" will pop-out as seen in figure 6.7. You may look up the stock you want by keying in the stock symbol into the "Stock" section at the top of the window, then you can select the direction you trade in the particular stocks by choosing Long or Short.

Furthermore, you may key-in the entry date of the particular stock you have in position. This will give you better information on your trading strategy.

After selecting the entry date, key in the quantity of stocks you have by its unit.

In this portfolio, there is an extra feature for you to key in your Entry price, Stop loss, and Profit Target to help you manage your trading plan.

You may also select your margin by dragging it from the left lowest margin to the right highest margin.

Some investors may have their portfolio diversified to different country and will find it difficult to calculate the profit due to the fluctuation of currencies. We are here to make it easy for you to see the value of your overseas portfolio by selecting the currency your stocks are based in.

Having stocks in different market may have different brokerage rates. You can also select the brokerage rate by choosing the brokerage fees you have set under Brokerage profile section.

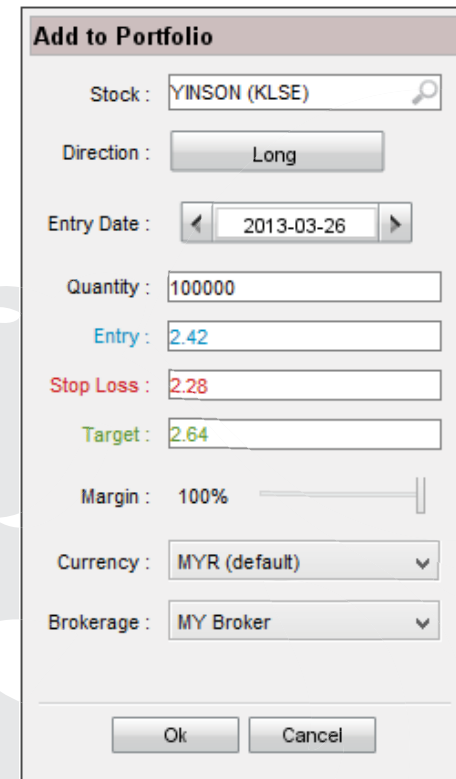
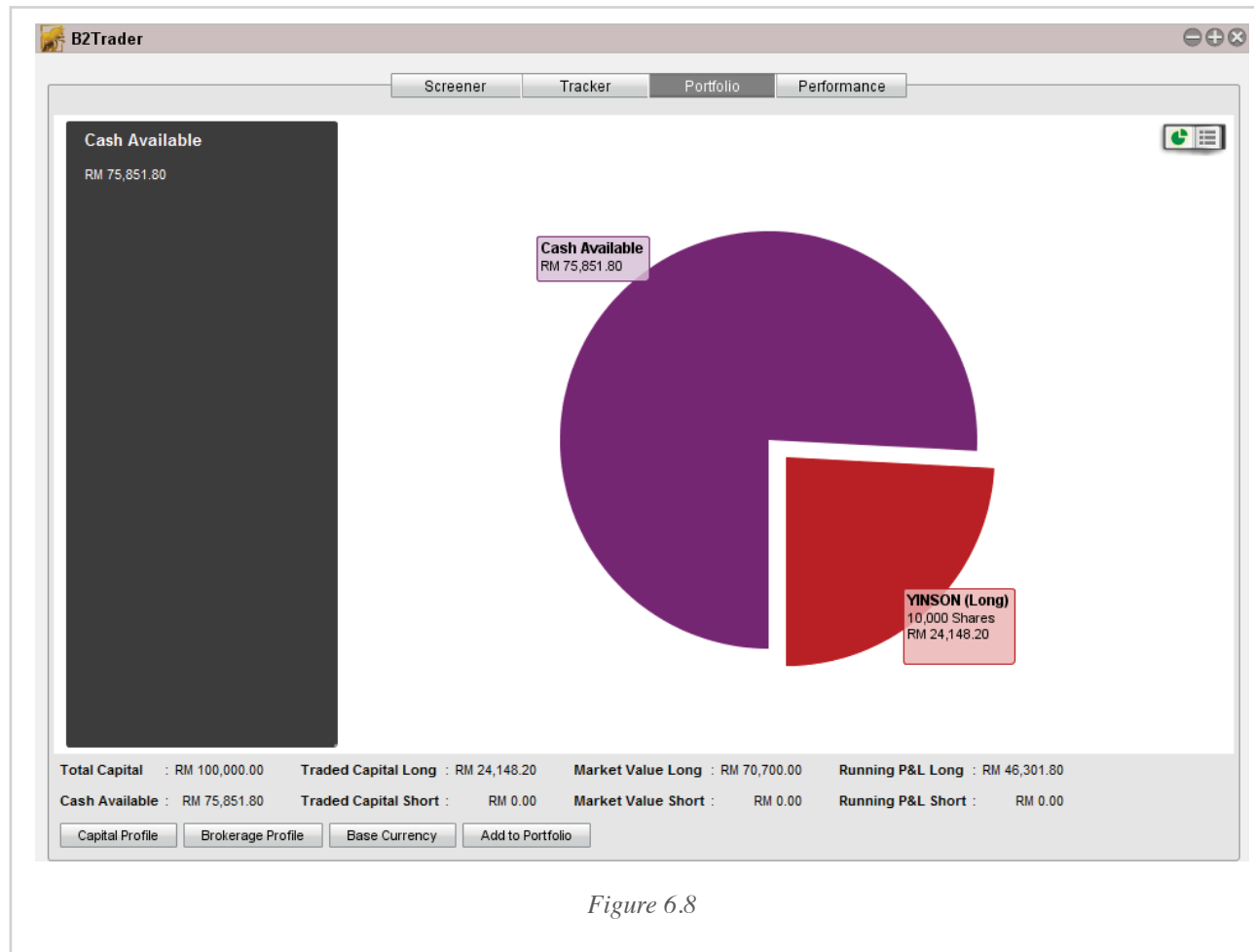


Figure 6.7

After you have added the stock into the portfolio, just click "Ok" to have the stock added into your portfolio and you will see the pie chart with an extra section indicating the stock you have just entered, as figure 6.8.



In the Pie chart view, click on the stocks in your portfolio in order to view the details of your trade. Then the details of the stock will be shown on the left side of interface grey column as seen in figure 6.9.

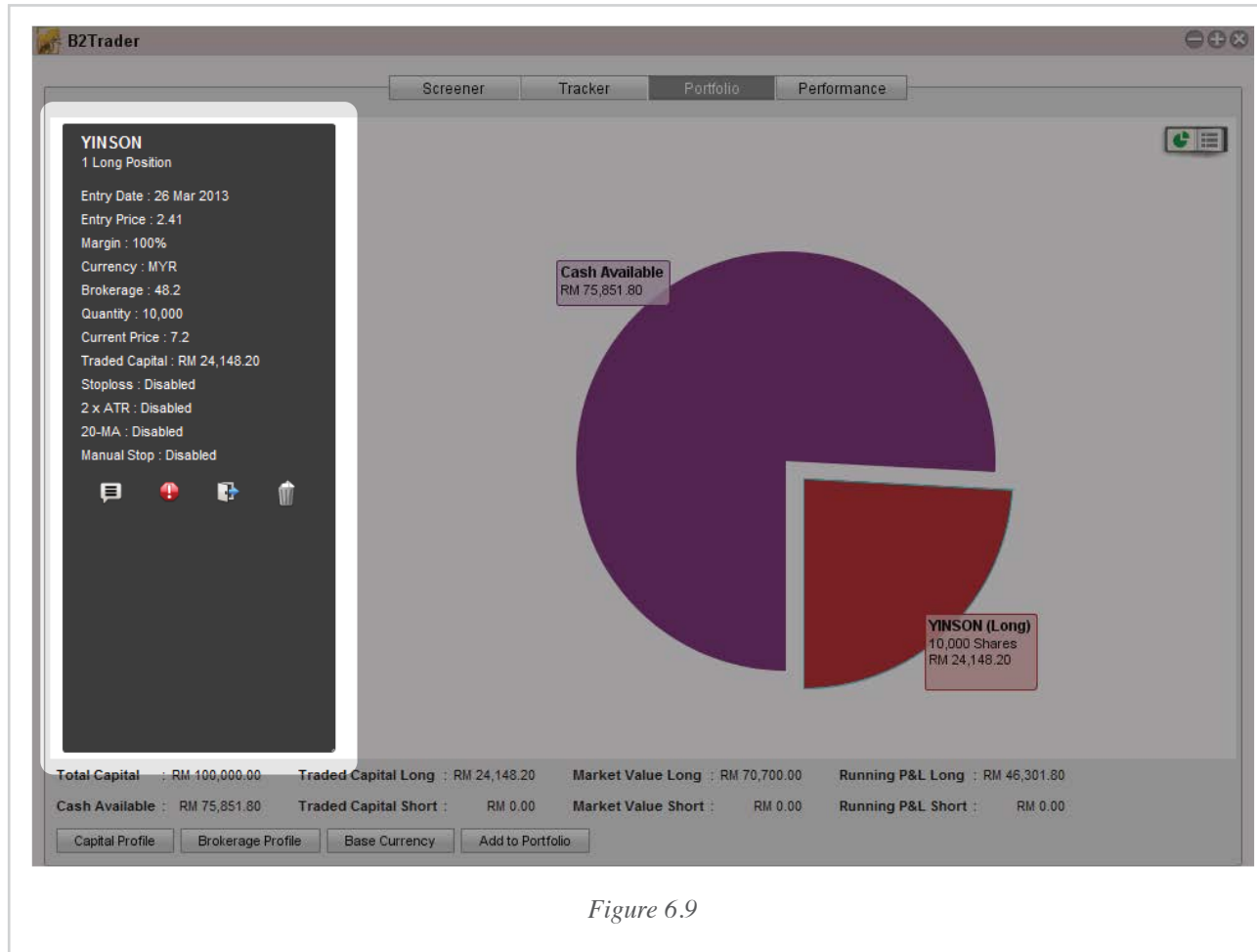


Figure 6.9

To view your portfolio in Table view, you may toggle the table view button at the top right corner as shown in figure 6.10. In table view, you will have a more detailed view on your portfolio, showing Entry price, Stop Loss level, Profit Target, and many more columns for you to choose from.

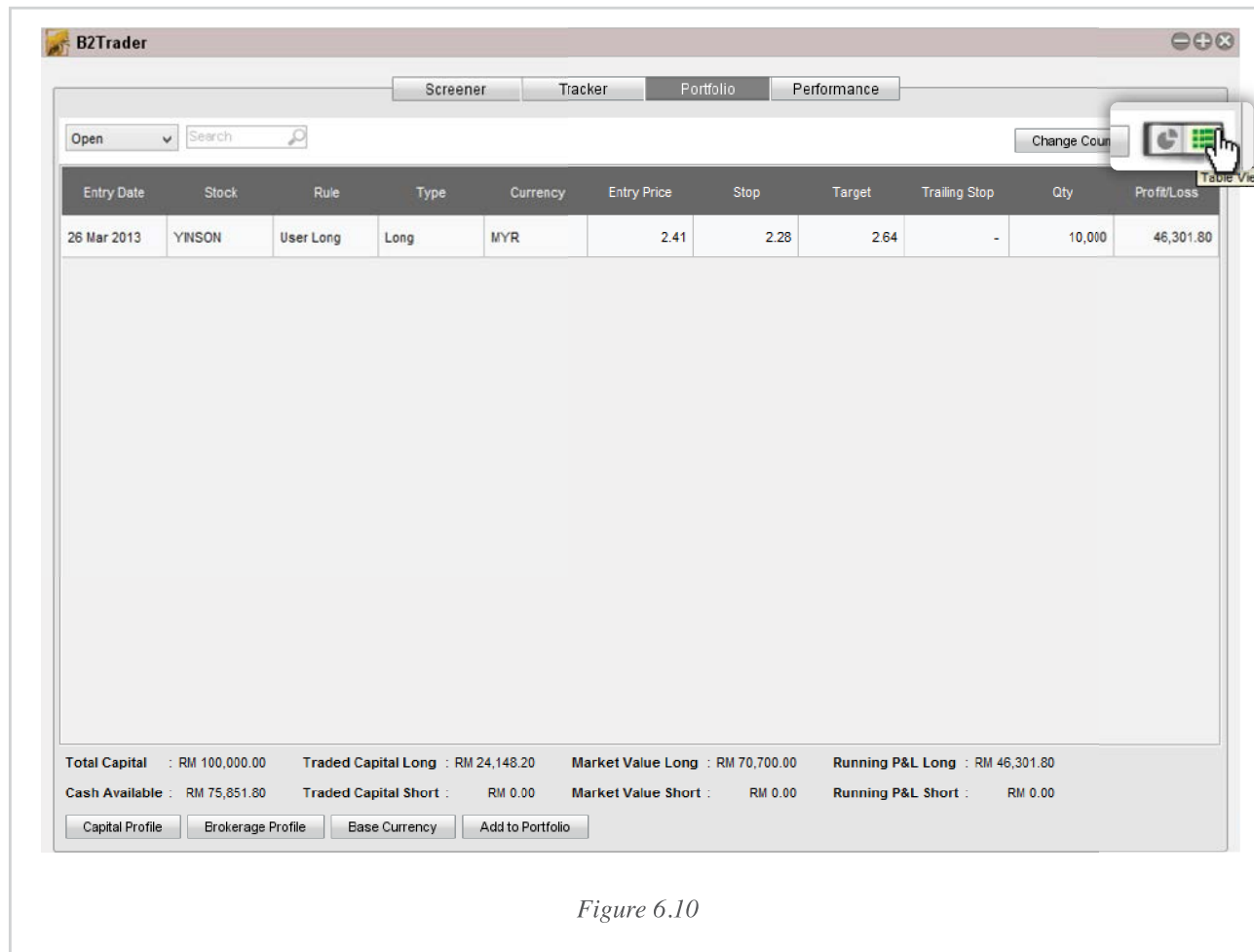


Figure 6.10

In Table view, it provides you with the details of the opened position/s of your trade and you may also choose to have a view of those closed position in the past, or both opened and closed position. To toggle these features, simply click on the drop down list at the top left corner of B2Trader window as shown in figure 6.11.

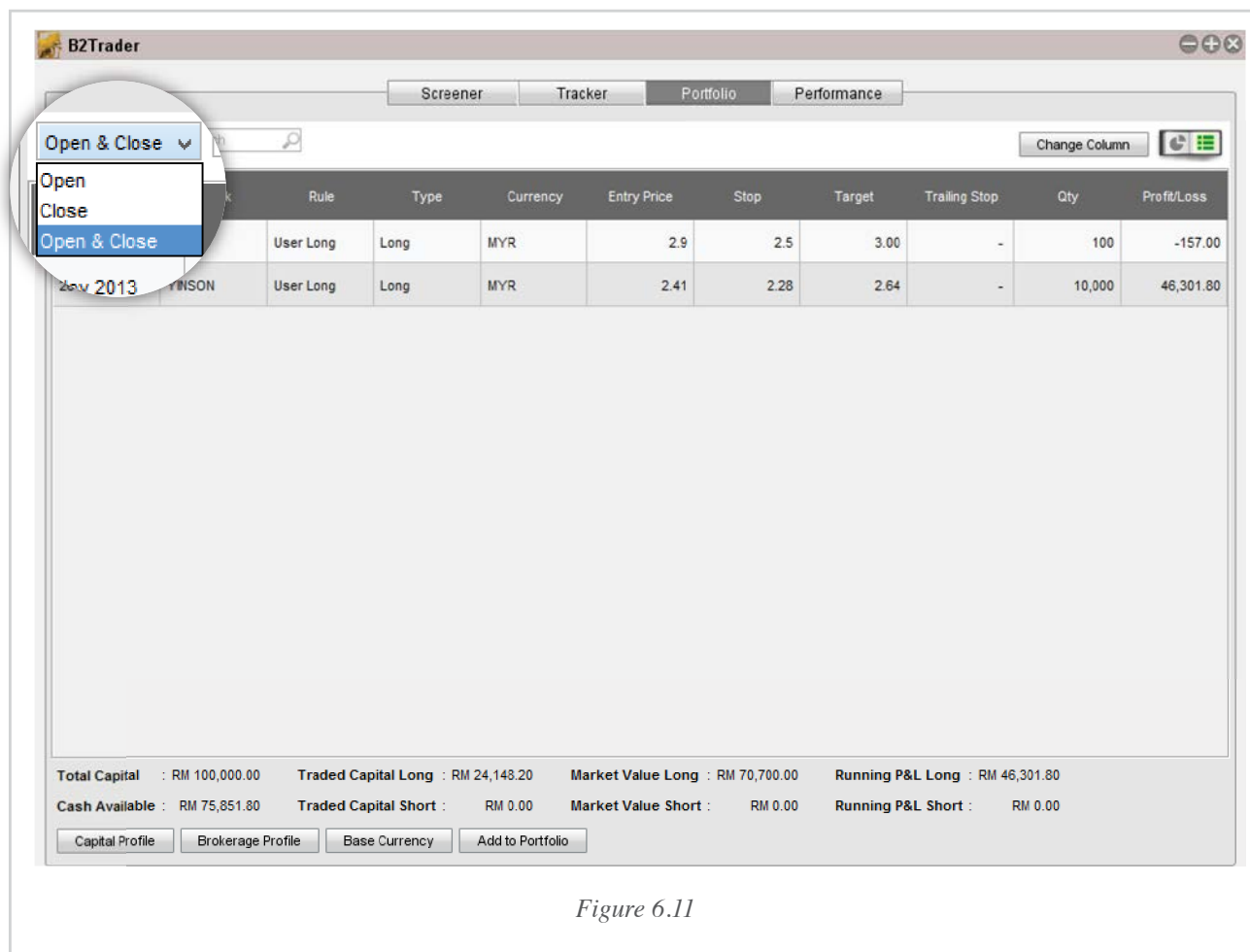


Figure 6.11

Different investors or traders may have different style of monitoring portfolio. By default, the column is shown in figure 6.12. However, if you want to add in more options to the column, you may click on the "Change Column" button next to the Table View/Pie Chart Toggle Button at the top right corner as highlighted with a red circle in figure 6.12

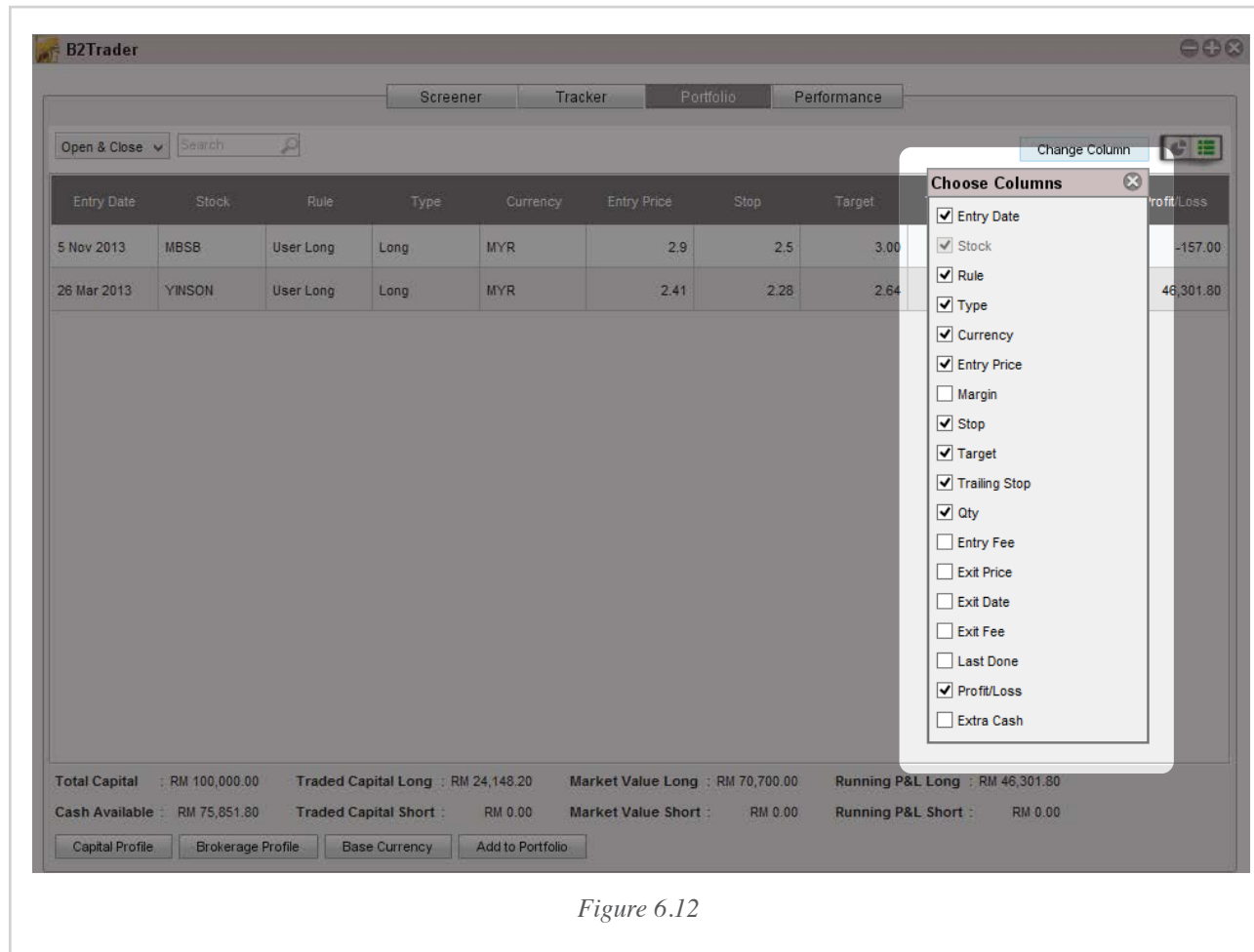



Figure 6.12

**YINSON**  
1 Long Position

Entry Date : 26 Mar 2013  
Entry Price : 2.41  
Margin : 100%  
Currency : MYR  
Brokerage : 48.2  
Quantity : 10,000  
Current Price : 7.2  
Traded Capital : RM 24,148.20  
Stoploss : Disabled  
2 x ATR : Disabled  
20-MA : Disabled  
Manual Stop : Disabled



In the Grey Column, there are 4 icons shown under the details of the trade as seen in figure 6.13.

*Figure 6.13*



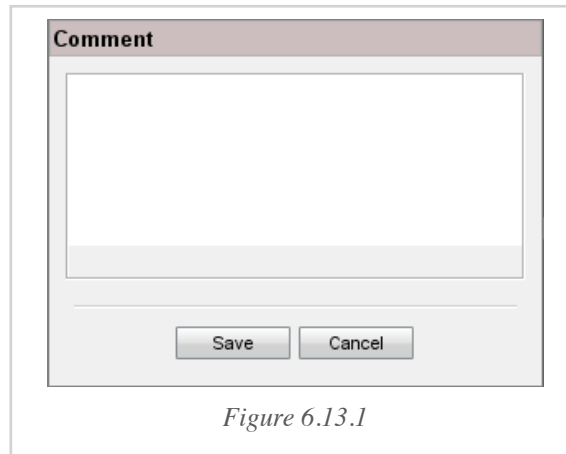


Figure 6.13.1



Icon no.1 is the comment icon for you to add comment on the stocks. A new window will pop out as seen in figure 6.13.1.

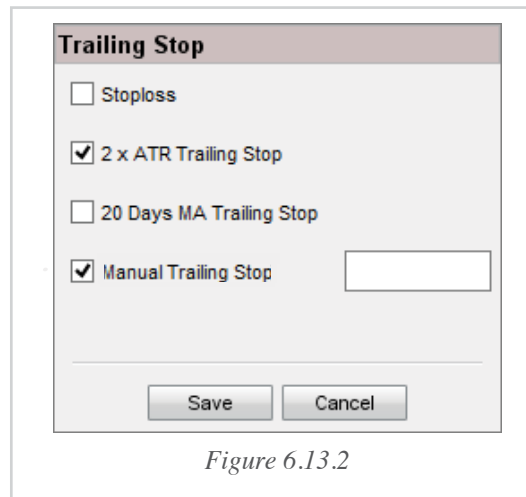


Figure 6.13.2



Icon no. 2 is to enter Trailing Stop on the stock. There are 4 trailing stop options available. You may choose more than 1 and it will alert you the one triggered first.



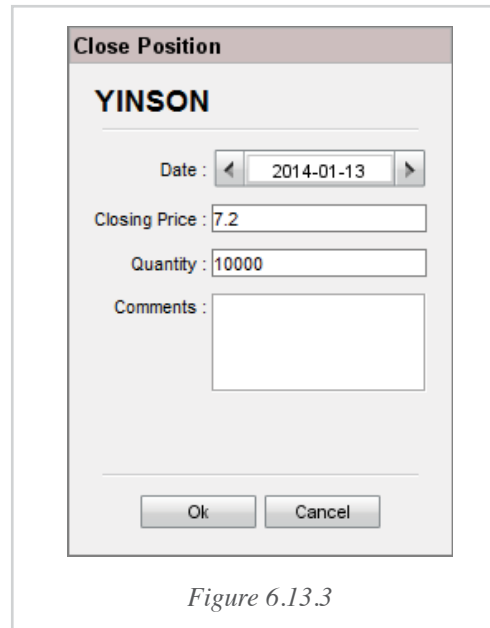


Figure 6.13.3



Icon no. 3 is to close position. You can select the exit date, closing price, the quantity, and comments on the trade.

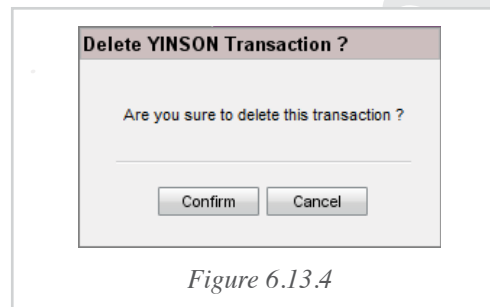


Figure 6.13.4



Icon no.4 is the delete icon of the trade. You can delete the trade if you have entered the position wrongly.

# 07. Performance Chart

You may track your performance in the "Performance" section of B2Trader. In the Performance section, you can view your performance in Cumulative P&L or Equity View.

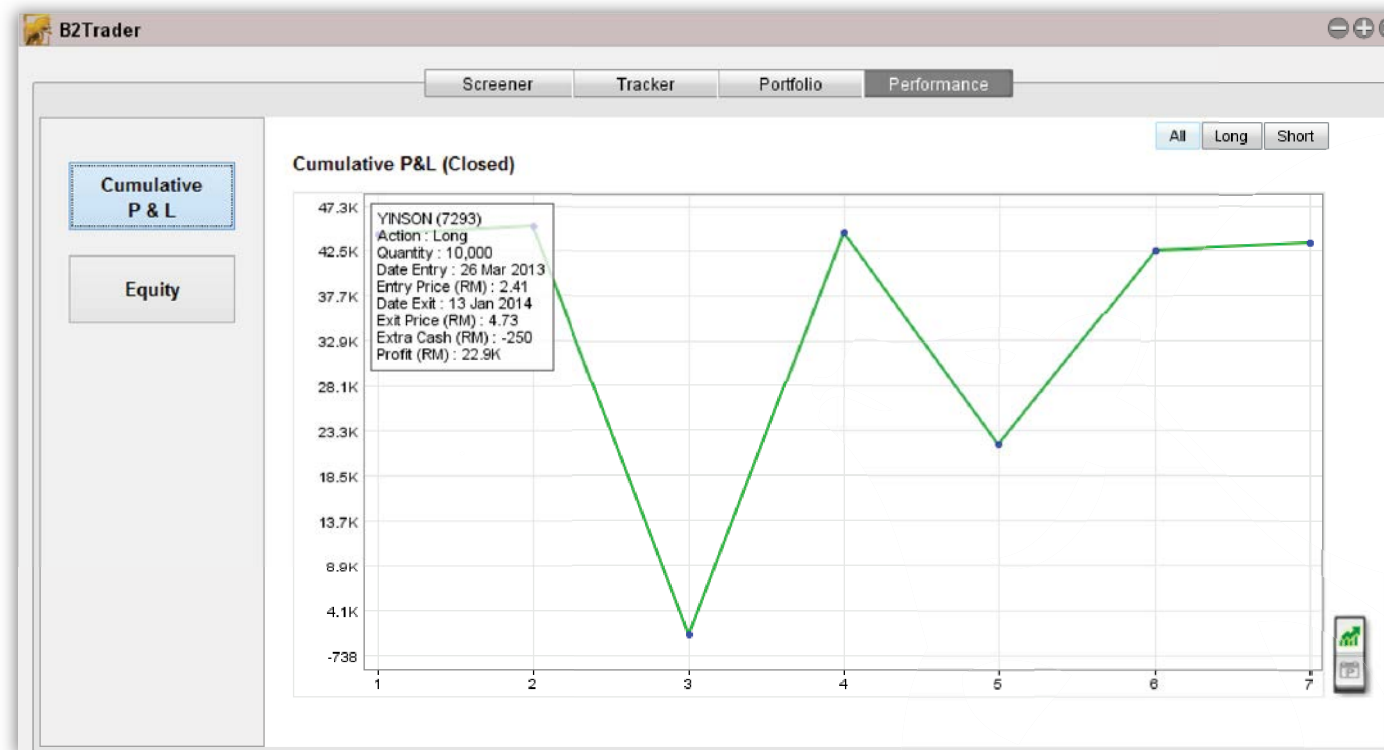


Figure 7.0

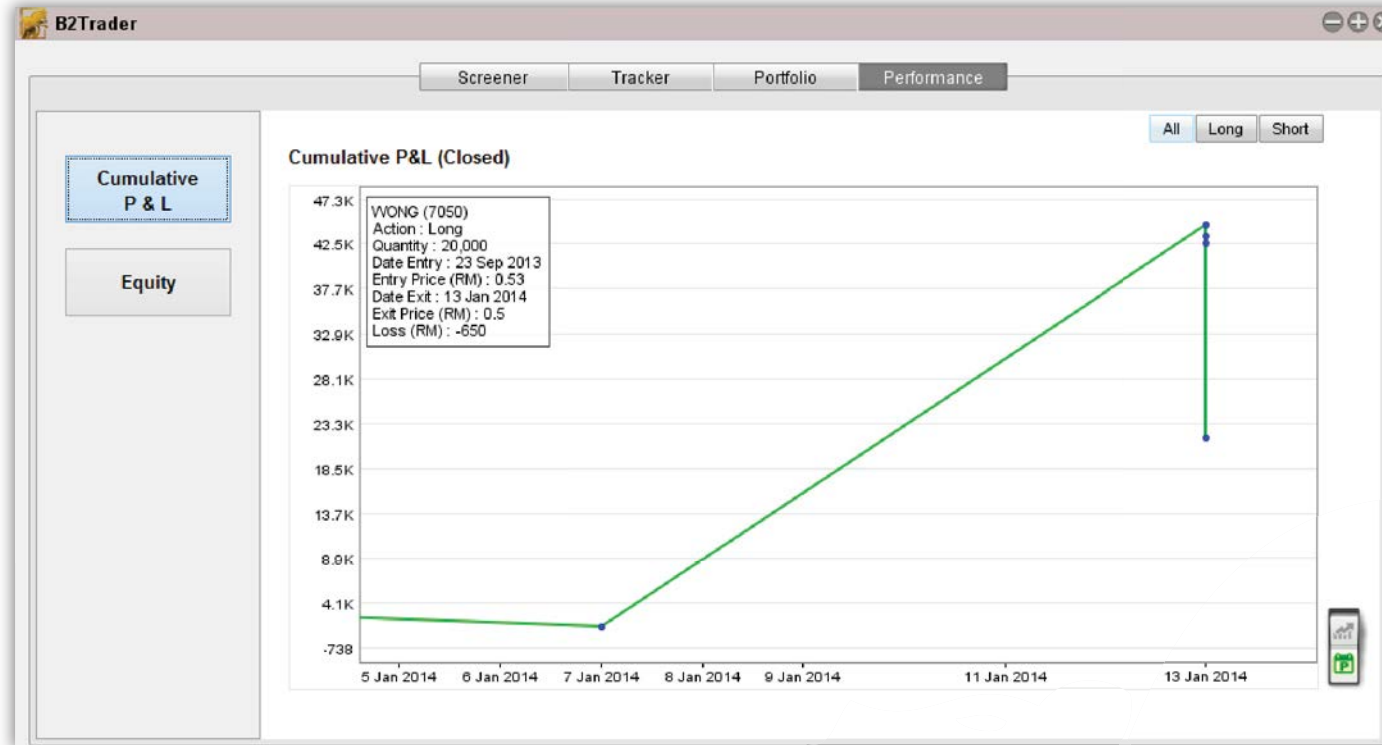


Figure 7.1

Cumulative P&L Chart shows the profit and loss of your portfolio in each trade (figure 7.0) or in the period (figure 7.1). Each blue dot represents a closed trade. If the trade made a profit, it will close higher than the last blue dot and vice versa. Move your cursor to the blue dot and it will show you the details of the trade as per figure 7.0.

Below the Cumulative P&L button on the left side of the Performance view, you will see an "Equity" button. Once you click on it, you will see your accumulated capital as shown in figure 7.3. This feature allows you to monitor your portfolio as it moves upwards, in terms of trade and period. It also allows you to track which period your portfolio performed the best.

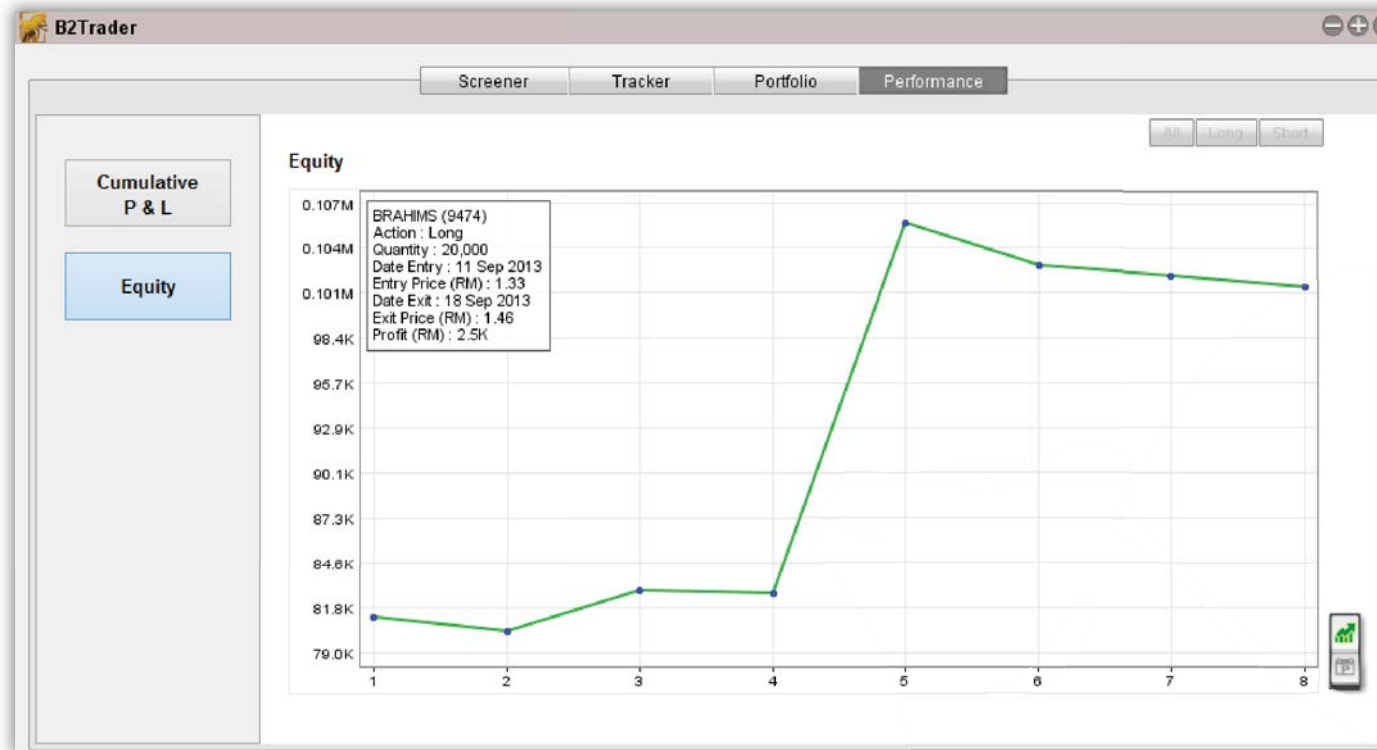


Figure 7.2

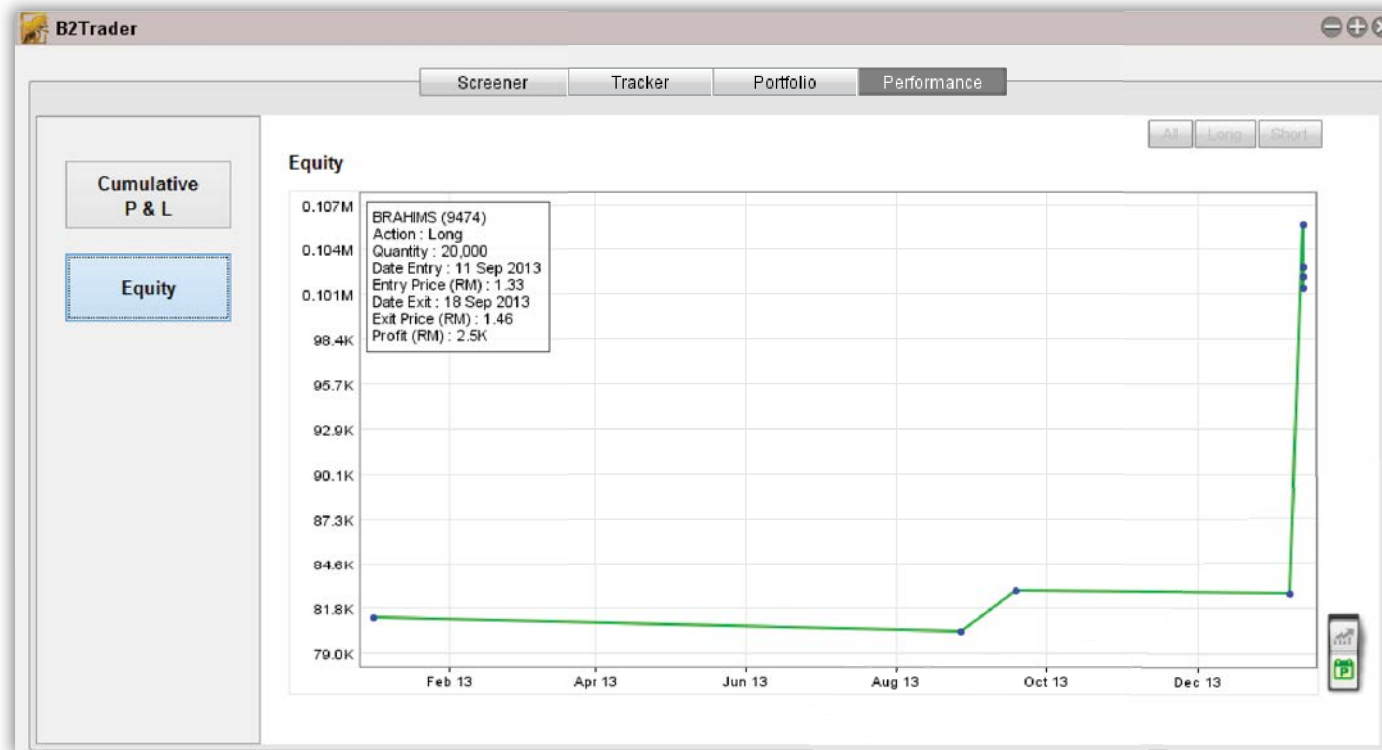


Figure 7.3